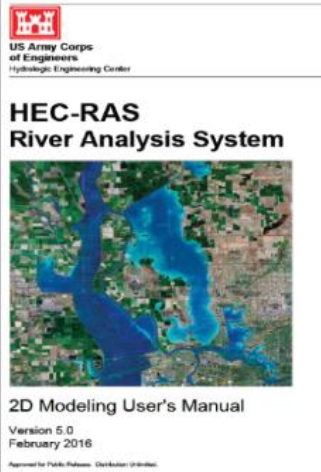


**Build, run, and animate 2D flood models
using free software in this intensive, interactive course**

HEC-RAS 6.3

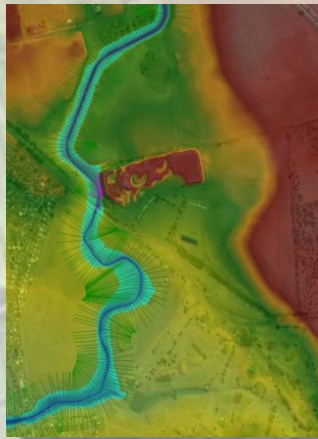
Perth 12-13 Oct 2022



Register at
www.surfacewater.biz/perth/

- Floodplain Mapping
- Hydraulic Structures
- Flood Routing
- Risk Assessment
- GIS Interfacing
- Grid Development

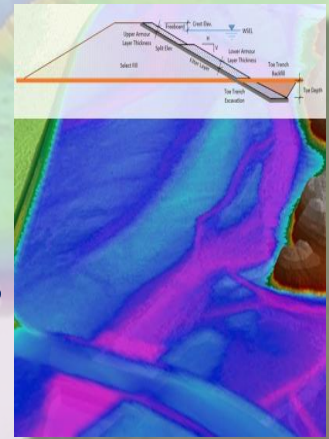
- ★ Professional Membership Discounts
- ★ Academic Discounts
- ★ Professional Development Hour Certification



Surface Water Solutions

www.surfacewater.biz

- Engineering consulting
- Technical courses & workshops
- Customised in-house training
- **Highly competitive rates**



Consulting services:

- Floodplain inundation mapping
- Dam breach and consequences
- Peer review and design verification
- Surface water management plans
- Hydraulic design and optimisation
- Bank stabilisation and armouring
- Monte Carlo optimisation analyses
- Fish passage modelling and design

Request a quotation at
info@surfacewater.biz

2023 Courses

- Adelaide
- Auckland
- Brisbane
- Melbourne
- Sydney
- Los Angeles
- Seattle
- New York
- Tampa

Contact Krey Price
on 0400 367 542

Training course topics

- 1D and 2D flood modelling
- Dam breach analysis and mapping
- Mobile bed sediment transport
- Culvert and bridge modelling
- ArcHydro, Spatial & 3D Analyst
- HEC-GeoRAS and HEC-GeoHMS
- QGIS, Crayfish, & TUFLOW plugins
- Water sensitive urban design

**Continuing professional
development certification**