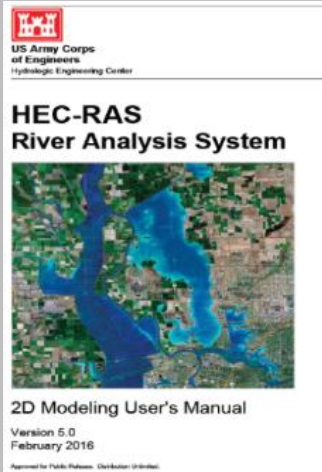


**Build, run, and animate 2D flood models  
using free software in this intensive, interactive course**

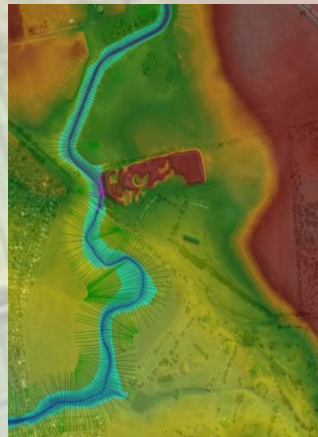
# HEC-RAS 6.3

**Perth 11-12 Oct 2022**



**Register at**  
[www.surfacewater.biz/perth/](http://www.surfacewater.biz/perth/)

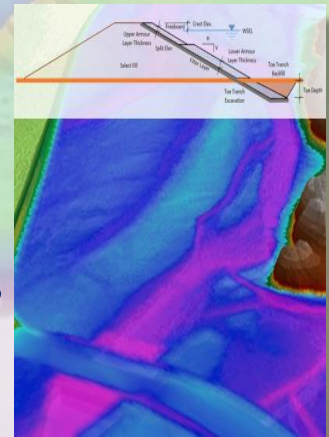
- Floodplain Mapping
- Hydraulic Structures
- Flood Routing
- Risk Assessment
- GIS Interfacing
- Grid Development
- ★ Professional Membership Discounts
- ★ Academic Discounts
- ★ Professional Development Hour Certification



## Surface Water Solutions

[www.surfacewater.biz](http://www.surfacewater.biz)

- Engineering consulting
- Technical courses & workshops
- Customised in-house training
- **Highly competitive rates**



### Consulting services:

- Floodplain inundation mapping
- Dam breach and consequences
- Peer review and design verification
- Surface water management plans
- Hydraulic design and optimisation
- Bank stabilisation and armouring
- Monte Carlo optimisation analyses
- Fish passage modelling and design

**Request a quotation at**  
[info@surfacewater.biz](mailto:info@surfacewater.biz)

### 2023 Courses

- Adelaide
- Auckland
- Brisbane
- Melbourne
- Sydney
- Los Angeles
- Seattle
- New York
- Tampa

**Contact Krey Price**  
on 0400 367 542

### Training course topics

- 1D and 2D flood modelling
- Dam breach analysis and mapping
- Mobile bed sediment transport
- Culvert and bridge modelling
- ArcHydro, Spatial & 3D Analyst
- HEC-GeoRAS and HEC-GeoHMS
- QGIS, Crayfish, & TUFLOW plugins
- Water sensitive urban design

**Continuing professional  
development certification**