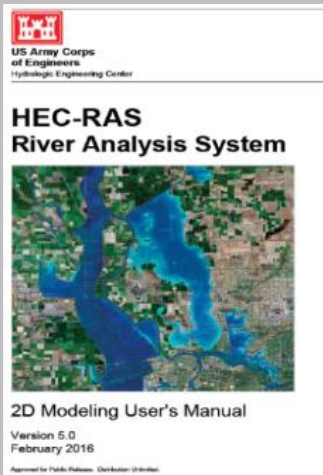


**Build, run, and animate 1D & 2D flood models
using free software in this intensive, interactive course**

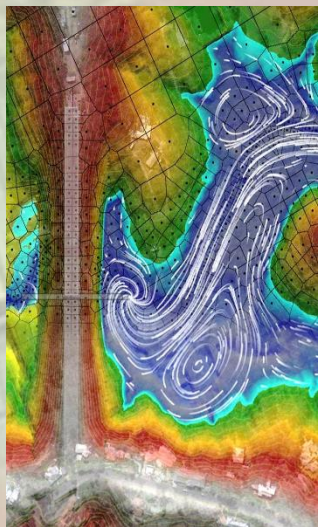
HEC-RAS 5.0

Dallas August 8-9, 2019



Register at
www.surfacewater.biz/dallas/

- Floodplain Mapping
- Hydraulic Structures
- Flood Routing
- Risk Assessment
- GIS Interfacing
- Grid Development
- ★ Professional Membership Discounts
- ★ Academic Discounts
- ★ Professional Development Hour Certification

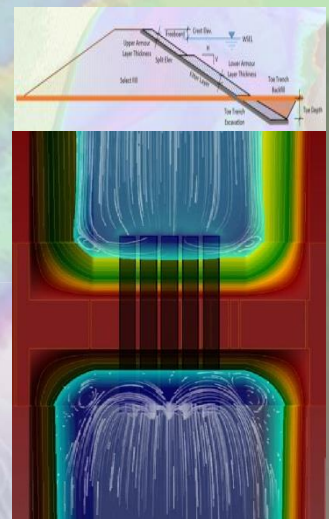


Surface Water
Solutions

www.surfacewater.biz

Instructor: Krey Price

Krey is a civil engineer with a 20-year, international career focussed on river mechanics and the modelling, design, and construction of hydraulic structures. Krey has extensive software development experience and has trained over 800 HEC-RAS course attendees worldwide.



**Southern Methodist
University
Dallas, TX**

Contact:
info@surfacewater.biz

**Places Limited
Register now for
\$250 per day!**

