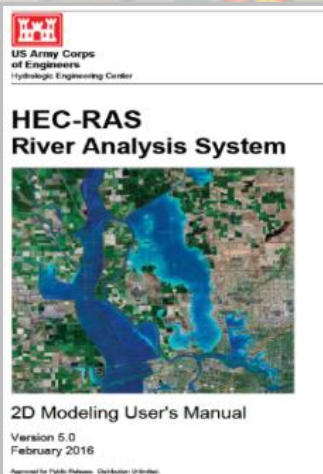


**Build, run, and animate 2D flood models
using free software in this intensive, interactive course**

HEC-RAS 5.0

Melbourne 23-24 Nov 2017



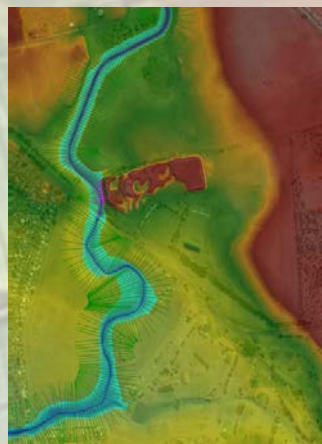
**Register at
www.surfacewater.biz**

- Floodplain Mapping
- Hydraulic Structures
- Flood Routing
- Risk Assessment
- GIS Interfacing
- Grid Development

★ Professional Membership Discounts

★ Academic Discounts

★ Professional Development Hour Certification



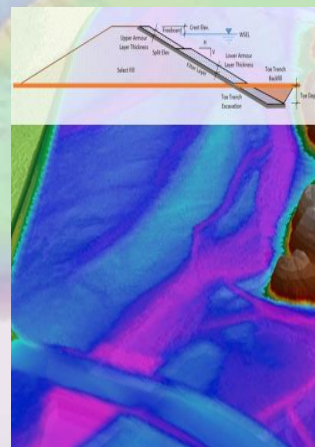
**Surface Water
Solutions**

www.surfacewater.biz

Instructor:

Krey Price, Director, Surface Water Solutions

Krey is a civil engineer with a 20-year, international career focussed on river mechanics and hydraulic modelling. Krey has trained over 400 attendees in 40 HEC-RAS courses since the release of Version 5.0.



Contact:

**info@surfacewater.biz
0400 367 542**

**Program details at
www.surfacewater.biz/melbourne/**

**Please join us at
WSP Southbank
28 Freshwater Place**

**Places limited!
Register soon to
secure your attendance**

