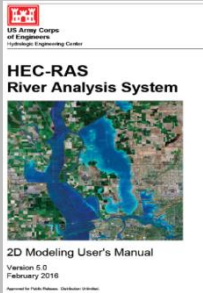




ICE WaRM

International Centre of Excellence  
in Water Resources Management



Learn to build, run, and animate  
1D and 2D flood models  
using free software

- Floodplain Mapping
- GIS Interfacing
- Hydraulic Structures
- Risk Assessment



Australian  
Water School

# HEC-RAS 5.0

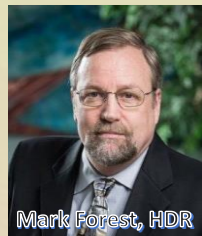
## Brisbane 11-15 Sep 2017

Flexible attendance options available  
to suit all background levels

Details at [www.surfacewater.biz](http://www.surfacewater.biz)



Proudly supporting FMA 2017



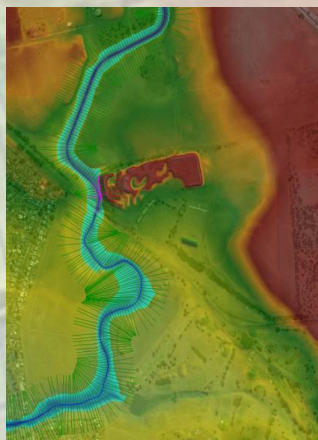
Mark Forest, HDR



Dr. Robert Keller



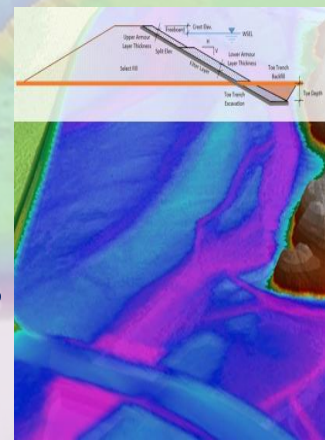
Krey Price, SWS



### Surface Water Solutions

[www.surfacewater.biz](http://www.surfacewater.biz)

- Engineering consulting
- Technical courses & workshops
- Customised in-house training
- **Highly competitive rates**



#### Consulting services:

- Floodplain inundation mapping
- Dam breach and consequences
- Peer review and design verification
- Surface water management plans
- Hydraulic design and optimisation
- Bank stabilisation and armouring
- Monte Carlo optimisation analyses
- Fish passage modelling and design

Request a quotation at  
[info@surfacewater.biz](mailto:info@surfacewater.biz)

#### 2017 Courses

- Adelaide
- Brisbane
- Darwin
- Hobart
- Melbourne
- Perth
- Singapore
- Sydney
- Wellington

Contact Krey Price  
on 0400 367 542

#### Training course topics

- 1D and 2D flood modelling
- Dam breach analysis and mapping
- Mobile bed sediment transport
- Culvert and bridge modelling
- ArcHydro, Spatial & 3D Analyst
- HEC-GeoRAS and HEC-GeoHMS
- QGIS, Crayfish, & TUFLOW plugins
- Water sensitive urban design

Continuing professional  
development certification